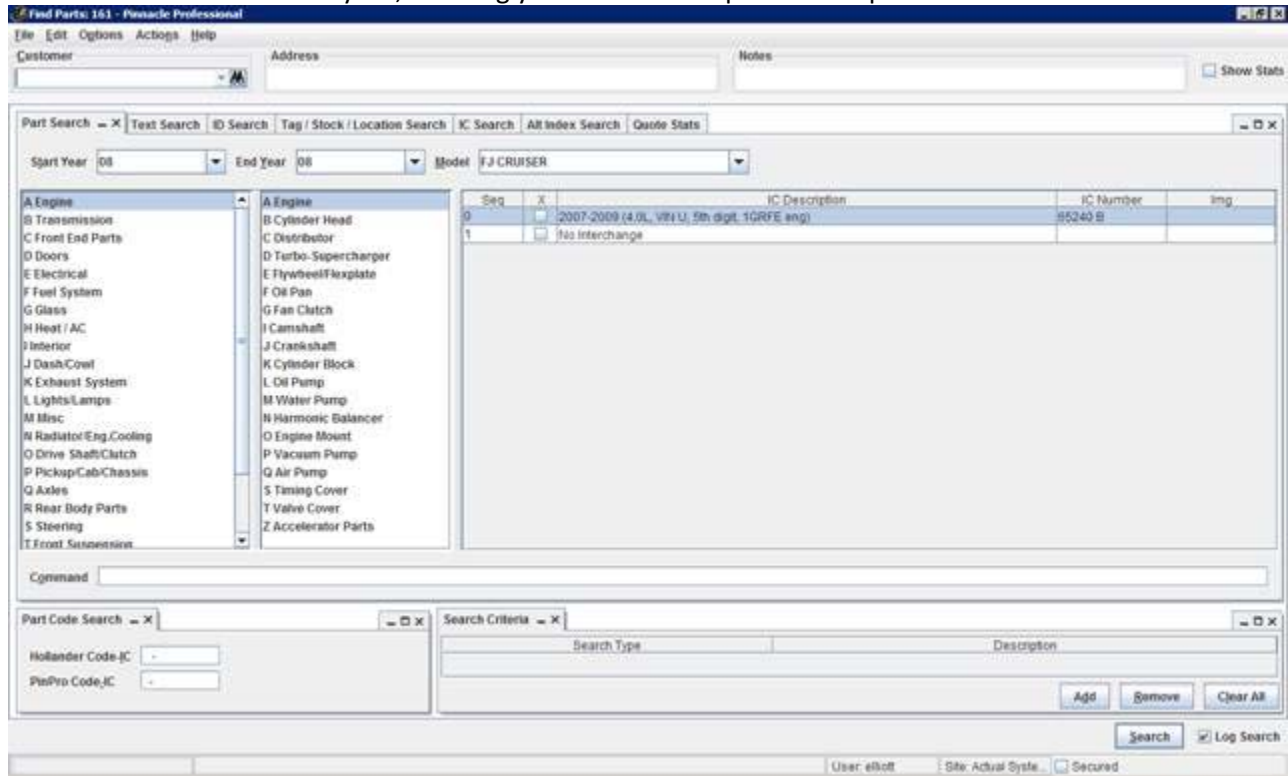


Changes to Find Parts in the Summer 2011 build

The first change that you will immediately see is a change to the layout of the Find Parts screen. The screen has a more flexible layout, allowing you to have multiple search options available in one view:



One “side-effect” of this change, however, is that the cursor no longer defaults to **Customer** field, which means that to get to the command line you will now have to hit [Tab] [Tab] (instead of the single [Tab] like before). Alternatively, you can navigate around the **Find Parts** screen by utilizing the “Alt” options. Throughout the screen, most fields have a letter that is underlined, for example the **C~~o~~mmand** line has “o” underlined, meaning you can hit Alt+o to access the command directly.

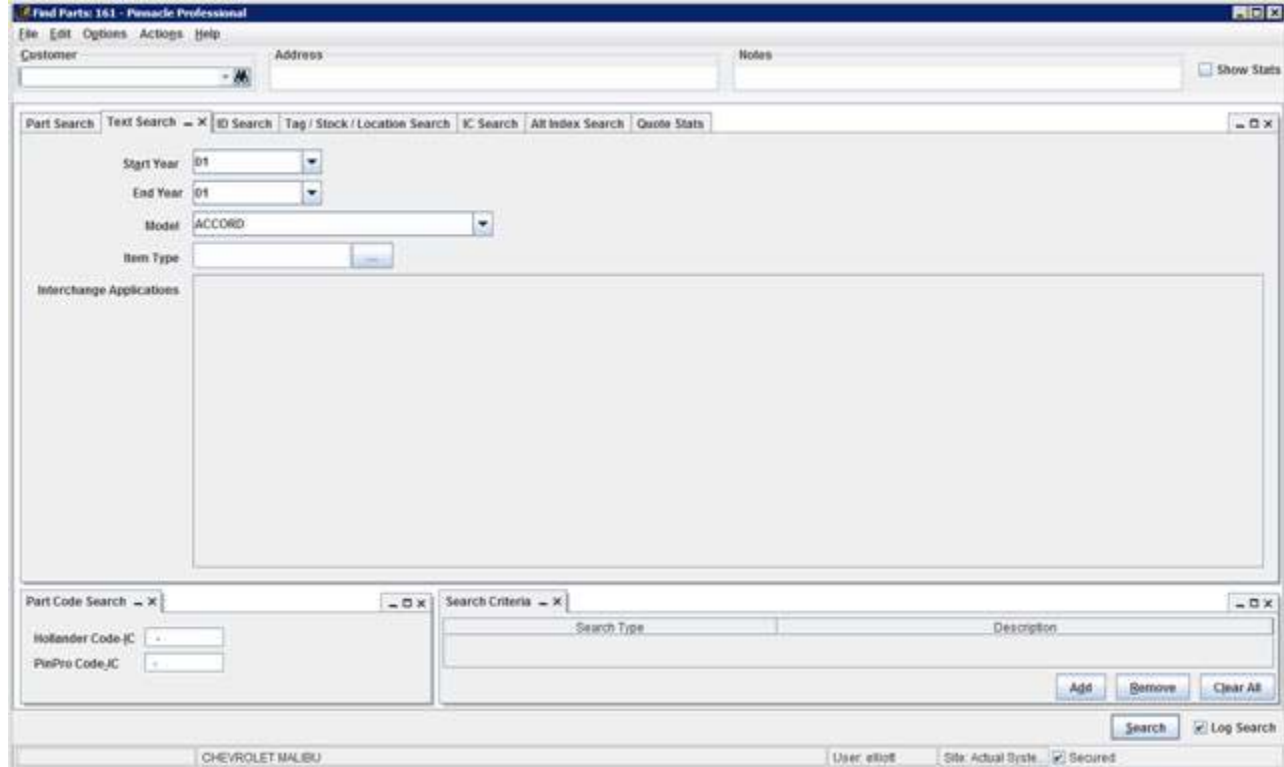
However, the changes increase functionality for part searches in a couple ways:

- **You can combine different search options in one screen.** The above screen grab illustrates a common setup with the new changes. The **Part Code** search is in the bottom left corner and is combined with the **Part Search**, simplifying the access to the two search options:
 - hit Alt + o to access the **Command** line for the standard search
 - hit Alt + i to access the **Part Code** search.
- **Toggle between searching by group and searching by name.** After entering the year and model in the **Command** line, if you have trouble locating a part code you can toggle to the text search to quickly search by name to locate the part you wish to look up.¹ To toggle to the text search:
 - right-click on one of the columns listing the part codes and choose **Select by Name**
 - Highlight any item, then simply type the name of the part you wish to look up
 - When the part you want is highlighted, hit the space bar or click the checkbox

¹ You can add customizable names to parts to use while using the text search. See the section on **Item Aliases** in the build document.

Navigating through text search

The text search has been expanded to allow for multiple year/part searches:



To navigate through the text search:

- From the **Start Year**, type the two-digit year and hit the [Tab] key
- The **End Year** will default to the **Start Year**, hit [Tab] to move on; otherwise enter the desired two-digit **End Year** and then hit [Tab] to proceed
- Begin typing the model, hit [Tab] once the model you wish is highlighted
- When selecting parts:
 - Start typing and you will see the list begin to filter to your part, when you are highlighted on the correct part hit the [Esc] key or the [Enter] key, then hit the [space bar] to select the part (the part is selected once the check mark appears).
 - To un-select a part, simply hit the [space bar] (the check mark will be removed).
 - When finished selecting all your parts, hit the [Tab] key
- Use the arrow keys to navigate to the correct interchange, hit [Tab] to move to the next interchange (will need to hit [Tab] twice to get to the next interchange).
- If searching for multiple models, hit Alt + d, then Alt + a to get back to the start year to add a different search

Tips

Right-click on the “...” and choose **Select by Name** to find parts using the part name or alias, choose **Select by Group** to find parts via the part code

Use Alt + a to get to the start year

can also hit [Tab][Tab] to get down to the start

Shift + [Tab] will take you back one field